

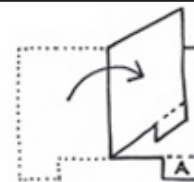
## Zoetrope Animation making the spinner - sheet 1

**you will need:**  
thin card (about 130gm), scissors,  
glue stick, rubberbands  
re-usable tack

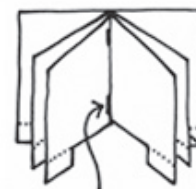
1 print these  
two sheets  
onto  
thin card



2 cut out along  
the black lines to  
make 3 shapes

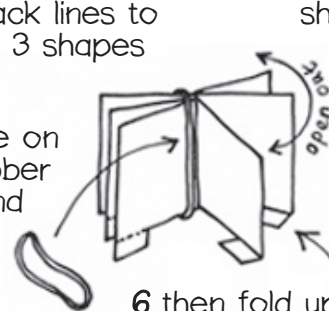


3 fold each  
shape in half



4 staple them  
together

5 slide on  
a rubber  
band



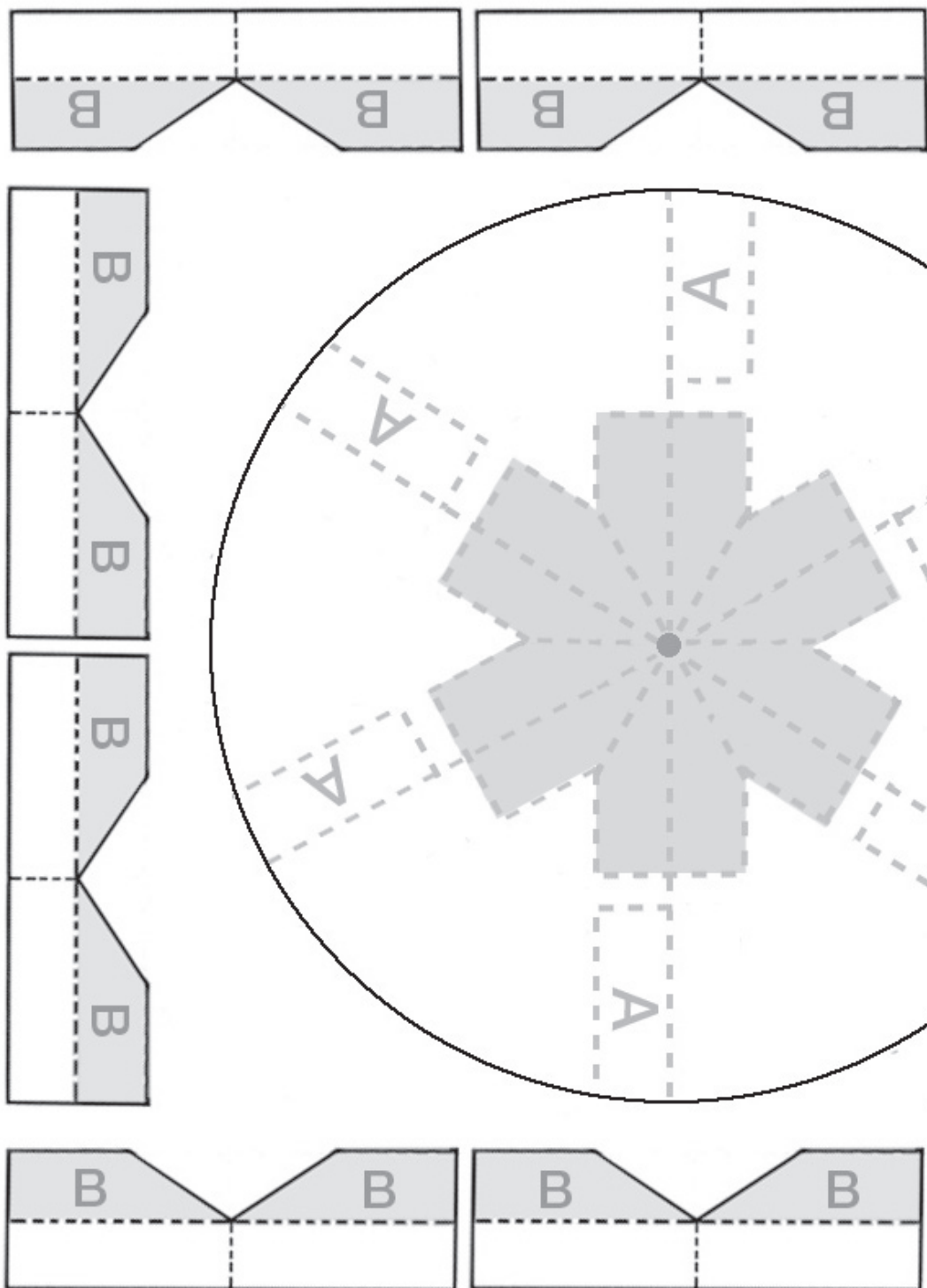
6 then fold up the tabs



7 loop a second  
rubber band  
through the first

**thinking by making**

making-ideas.blog  
design: hine & Limbrick © 2017



# Zoetrope Animation

## making the spinner - sheet 2

thinking **by making**

making-ideas.blog  
design: hine & Limbrick © 2017  
free for children to make  
(all copyright reserved)

7 cut out the disc to make the spinner base

8 glue the stapled spinner onto the base at each tab **A** make sure all the tabs face the same way



9 fix small pieces of re-usable tack to the corners



10 the spinner is now ready - add the animated images to each section

11 twist the rubber band to wind up the spinner, and let it go to see the animation in action!

### optional extra step:

fix the extra **B** inserts onto the base of the spinner at the centre - this will allow you to easily slot your animated drawings in place

12 cut and fold the six inserts



14 now slide your images behind the inserts in each section

13 glue them to the shaded areas on the base. Only put glue on the shaded part of these tabs - don't glue them to the verticle sides